



Zekeriyaköy Campus

CURRICULUM  
INFORMATION  
FOR YEAR SIX  
PARENTS

*"Eruditio limites permeat"*  
*"Education Transcends Boundaries"*

## A Message from the Director and Deputy Director

Dear Parents,

Welcome to the British International School Istanbul. BISI has a caring approach towards children and staff. The atmosphere is purposeful but calm where individuals are valued and respected.

We hope that you find this booklet useful. We have based much of our work on the National Curriculum for England and Wales. In this booklet you will find an overview of the National Curriculum and specific information on the work being covered in your child's class.

For more information, please feel free to contact us.

Yours sincerely,

Richard I'Anson  
Pre School & Primary  
School Director

Amanda Ilhan  
Pre School & Primary  
School Deputy Director

### CONTACT INFORMATION

Richard I'Anson

Phone: (0212) 2575136

Email: richardianson@bis.k12.tr

Amanda Ilhan

Phone: (0212) 2027027

Email: amandailhan@bis.k12.tr

# Our Staff:



Director: Richard I'Anson  
Deputy Director: Amanda Ilhan

## **Alkent Campus**

### Reception

Julie Dedeoğlu

### Year One

Julie Peltek

### Year Two

Margaret Boateng\*\*

Alison Güzel\*

### ESL

Jennifer Woodham

### Music

Lisa Mayer

### PE

Gill Yenilmez

### Turkish

Sibel Yiğit

### Teaching Assistants

Meral Hullu

Dilek Ayan

Ege Altinel

### Campus Secretary

Ataman Başpınar

### Campus Nurse

Mevne Beyleryan

\*Campus Coordinator

\*\*Curriculum Coordinator

### SEN (All Campuses)

Toni Altuğ

SEN Teaching Ass.

Merrie Hacıevliyagil

## **Etiler Campus**

### Year Three

Lizzie Lincoln

Jessica Holt

### Year Four

Mary George\*

### Year Five

Eileen Aydınlar

### Year Six

Nikki Dereboy\*\*

### ESL

Jackie Goudy

### Music

Lisa Mayer

### PE

Gill Yenilmez

### Turkish

Sibel Yiğit

### French

Lucie Lecocq

### Teaching Assistants

Filiz Benian

Fulya Esen

### Librarian

Çiğdem Dwyer

### Campus Secretary

Rumeysa Utku

### Campus Nurse

Mevne Beyleryan

## **Zek Campus**

### Reception

Heather Caron

Tuba Çalışır

Leigh Orman-Rutene\*

Nurcan Burber

### Year One

Katrina Beck

Esen Bozkaya

### Year Two

Carolyn Güven

Lynne Karabulut

### Year Three

Julie Eşiyok

Jill Parker

### Year Four

Joanne Sutherland-Smith

Sarah Tatal

### Year Five

Rebecca Fox

David Scarrff

### Year Six

Julianne Aycan

Cara Frigeri\*\*

### ESL

Dorothy Gwillim

Marion Oner

### Music

Lisa Mayer

Gill Dwan

### PE

Clayton Neill

### Turkish

Sibel Yiğit

Nursena Kamas

### French

Lucie Lecocq

### Teaching Assistants

Didem Kerik

Figen Tolongüç

Zeynep Bayır

Yunus Tatal

### Librarian

Şükran Uzun

### Campus Secretary

Yeliz Altunsoy

### Campus Nurse

Yasemin Eryüksel

## What is the National Curriculum?

### **The Structure**

For each subject and for each *Key Stage*, *Programmes of Study* set out what students should be taught, and the *Attainment Targets* set out the expected standards of students' performance.

### **What are Key Stages?**

Foundation Stage - *Reception*  
Key Stage 1 - *Years 1 & 2*  
Key Stage 2 - *Years 3—6*

### **What are Programmes of Study?**

They set out what students should be taught in each subject at each *Key Stage*, and provide the basis for planning schemes of work.

### **What are Attainment Targets & Level Descriptions?**

An *Attainment Target* sets out the knowledge, skills and understanding which students of different abilities and maturities are expected to have by the end of each *Key Stage*.

The *Level Descriptions* provide the basis for making judgements about students' performance at the end of KS1 and KS2.

### **Promoting Skills**

There are 6 key skill areas:

- *Communication*
- *Application of number*
- *Information Technology*
- *Working with others*
- *Improving own learning and performance*
- *Problem solving*

Additionally there are:

### **Thinking Skills**

By using thinking skills students can focus on 'knowing how' as well as 'knowing what', that is learning to learn.

- Information Processing
- Reasoning
- Enquiry
- Creative Thinking
- Evaluation
- Independent Enquiry

### **What are the National Literacy and Numeracy Strategies ?**

These are designed to focus on and raise standards in English and Mathematics.

An excellent link to help parents understand the curriculum is: [www.direct.gov.uk/en/EducationAndLearning](http://www.direct.gov.uk/en/EducationAndLearning)

## Literacy

We base our Literacy (English) course on the National Curriculum Literacy guidelines. We have daily skills Literacy lessons each week plus one library lesson per week where we develop library skills.

Literacy is divided into three main sections. A variety of topics from all areas will be covered the first two terms.

### Fiction

- Fiction genres
  - Extending narratives
  - Authors and texts
- Short stories with flashbacks



### Non-Fiction

- Biography and autobiography
- Journalistic writing
- Argument
- Formal/impersonal writing

### Poetry

- The power of imagery
- Finding a voice



## English as a Second Language (ESL)

We have two specialist ESL teachers, Dorothy Gwillim and Marion Öner, to work with children for whom English is not a native language. They work alongside the class teacher and withdraw students as necessary, integrating the students back into mainstream lessons as soon as possible.

## Numeracy

We follow the National Curriculum Numeracy guidelines. The planning structure for all years is organized into five blocks with each block being revisited termly.

The blocks are as follows:

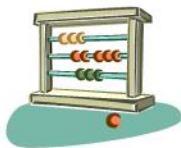
**Block A** – Counting, partitioning and calculating

**Block B** – Securing number facts, understanding shape

**Block C** – Handling data and measures

**Block D** – Calculating, measuring, and understanding shape

**Block E** – Securing number facts, relationships and calculating



## Modern Languages

### Turkish

Students receive 45 minutes of Turkish each week from specialist teachers,

### French

Students in Year Six receive two lessons of 45 minutes each week from a specialist teacher, Lucie Lecocq.



## Music

Students have two 45 minute sessions each taken by a specialist Music teacher, Gill Dwan.



## Science

Our course is based upon the Science National Curriculum Programmes of Study.

Topics covered during the year include:

Food Chains, Micro-organisms, Dissolving, Different Changes, Forces in Action, Seeing Things, Changing Circuits, Growing Up



## Humanities (History & Geography)

We follow the National Curriculum Programmes of Study but with a local flavour.

### History

Tudor Exploration



### Geography

A Mountain Environment  
Investigating Rivers

## Design & Technology (DT)

Areas covered include:

Fairground Rides  
Shelters



## Art

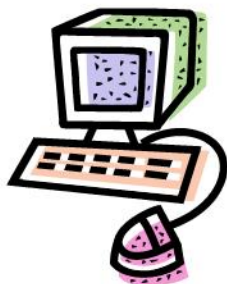
This year we examine:  
A sense of place  
People in action  
What a Performance



### **Information and Communication Technology (ICT)**

Each classroom has a computer and shared printer. In addition there is one lesson each week in the computer suite where computer skills are taught formally. They include:

- General Technological Awareness
- Multimedia Presentation
- Spreadsheets Modelling
- Control and Monitoring
- Using the Internet to search large databases



### **Physical Education (PE)**

We have specialist PE teachers, who takes students for two 45 minute lessons per week.

We use the Zekeriyaköy Campus facilities for swimming and athletics.



We hold an annual Cross Country Cace, a Sports Day and a Swimming Gala.

We also have an annual ski trip in February.

### **Personal, Social, and Health Education (PSHE)**

We encourage students to be responsible, caring confident members of society. This is achieved by both informal means, the 'hidden curriculum'; and more explicit ways such as Circle Time and our 'SEALS' scheme.



## Other things you might like to know

### **Staffing**

All our staff are qualified experienced expatriate teachers. With the exceptions of the teachers of French and Turkish they are all English native speakers mainly from the UK, Australia, New Zealand, Canada and the USA.

### **Assessment**

In line with the UK our students take their SATs at the end of Year 2 and Year 6. There is also a system of teacher assessment and extensive record keeping.

### **Reporting**

There are two formal written reports each year in December and June, as well as two Parent/Teacher Consultation evenings in October and April to discuss the work of your child.

### **Homework Policy**

We have a homework policy which covers the whole of Primary. In Year 6 your child should be receiving about 50 minutes of homework each evening. It should be recorded in a white Home School Contact Book which you can sign and return to school. This book can also be used as a means of communication between home and school.

### **Uniform**

We have a school uniform at BISI and we expect all students to wear it with pride.

### **Break Time**

There is a snack of fresh fruit or vegetables plus bottled water is available.

### **Lunch**

The school provides a cooked lunch every day, except on school journeys when a packed lunch is prepared. Lunch normally consists of soup, a main course and dessert. Bottled water is available to drink.

### **Extra Curricular Activities (Clubs)**

We have a range of clubs which run on a 6 week cycle. Information about the clubs are sent out around the beginning of each term.

### **Assemblies**

These are held every Friday morning. We have a wide range of assemblies from drama to music, puppets to celebrating success. Parents, relations and friends are always welcome to join us.



**the  
BRITISH**

**INTERNATIONAL SCHOOL  
I S T A N B U L**

**School Directors**

Amanda Ilhan

Pre School & Primary School Deputy Director

Phone: (0212) 2027027

Email: amandailhan@bis.k12.tr

Richard I'Anson

Pre School & Primary School Director

Phone: (0212) 2575136

Email: richardianson@bis.k12.tr

William Bradley

Secondary Director

Phone: (0212) 2027027

Email: williambradley@bis.k12.tr

**Director of Admissions**

Tuba Güven

Registrar

Phone: (0212) 2867375

Email: registrar@bis.k12.tr

**Head of PR/Communications**

Helen Kiran

Communications

Phone: (0212) 2027027 ext: 175

Email: communications@bis.k12.tr

[www.bis.k12.tr](http://www.bis.k12.tr)