



School Directors

Amanda Ilhan

Pre School & Primary School Deputy Director

Phone: (0212) 2027027

Email: amandailhan@bis.k12.tr

Richard I'Anson

Pre School & Primary School Director

Phone: (0212) 2575136

Email: richardianson@bis.k12.tr

William Bradley

Secondary Director

Phone: (0212) 2027027

Email: williambradley@bis.k12.tr

Director of Admissions

Tuba Güven

Registrar

Phone: (0212) 2867375

Email: registrar@bis.k12.tr

Head of PR/Communications

Helen Kiran

Communications

Phone: (0212) 2027027 ext: 175

Email: communications@bis.k12.tr

www.bis.k12.tr



Zekeriyaköy Campus

CURRICULUM
INFORMATION
FOR YEAR THREE
PARENTS

"Eruditio limites permeat"
"Education Transcends Boundaries"

Other things you might like to know

Staffing

All our staff are qualified experienced expatriate teachers. With the exceptions of the teachers of French and Turkish they are all English native speakers mainly from the UK, Australia, New Zealand, Canada and the USA.

Assessment

In line with the UK our students take their SATs at the end of Year 2 and Year 6. There is also a system of teacher assessment and extensive record keeping.

Reporting

There are two formal written reports each year in December and June, as well as two Parent/Teacher Consultation evenings in October and April to discuss the work of your child.

Homework Policy

We have a homework policy which covers the whole of Primary. In Year 3 your child should be receiving about 30 minutes of homework each evening.

Uniform

We have a school uniform at BISI and we expect all students to wear it with pride.

Break Time

There is a snack of fresh fruit or vegetables plus bottled water is available. Students are also required to bring in their own water bottle.

Lunch

The school provides a cooked lunch every day, except on school journeys when a packed lunch is prepared. Lunch normally consists of soup, a main course and dessert. Bottled water is available to drink.

Extra Curricular Activities (Clubs)

We have a range of clubs which run on a 6 week cycle. Information about the clubs are sent out around the beginning of each term.

Assemblies

These are held every Friday morning. We have a wide range of assemblies from drama to music, puppets to celebrating success. Parents, relations and friends are always welcome to join us.

A Message from the Director and Deputy Director

Dear Parents,

Welcome to the British International School Istanbul. BISI has a caring approach towards children and staff. The atmosphere is purposeful but calm where individuals are valued and respected.

We hope that you find this booklet useful. We have based much of our work on the National Curriculum for England and Wales. In this booklet you will find an overview of the National Curriculum and specific information on the work being covered in your child's class.

For more information, please feel free to contact us.

Yours sincerely,

Richard I'Anson

Pre School & Primary
School Director

Amanda Ilhan

Pre School & Primary
School Deputy Director

CONTACT INFORMATION

Richard I'Anson

Phone: (0212) 2575136

Email: richardianson@bis.k12.tr

Amanda Ilhan

Phone: (0212) 2027027

Email: amandailhan@bis.k12.tr

Our Primary Staff:



Director: Richard I'Anson
Deputy Director: Amanda Ilhan

Alkent Campus

Year One

Aix Peacock

Molly Hill

Year Two

Alison Güzel*

Candace Borcharding

ESL

Jennifer Woodham

Music

Peter Lawson

PE

Gill Yenilmez

Turkish

Hatice Girgin

Teaching Assistants

Yeliz Altınsoy

Ece Altinel

Campus Secretary

Leda Davulciyan

Campus Nurse

Mevne Beyleryan

*Campus Coordinator

**Curriculum Coordinator

SENCo

Agnieszka Hügel

SEN Teachers

Moira Reid

Rachel Lings

SEN Teaching Ass.

Figen As

Etiler Campus

Year Three

Carolyn Güven*

Year Four

Heather Bowen

Jordan Smigelsky

Year Five

Paul Pembridge

James Appleby

Year Six

Nikki Dereboy

ESL

Jackie Goudy

Music

Peter Lawson

PE

Gill Yenilmez

Turkish

Hatice Girgin

French

Vincent di Placido

Teaching Assistants

Filiz Benian

Fulya Esen

Librarian

Çiğdem Dwyer

Campus Secretary

Rumeysa Utku

Campus Nurse

Mevne Beyleryan

Zek Campus

Year One

Charlotte Emerson

Lizzie Lincoln

Year Two

Julie Esiyok

Lynne Karabulut

Year Three

Jill Parker

Julianne Aycan

Year Four

Joanne Sutherland-Smith

Kate Thomas

Year Five

David Scarff

Martin Boardman

Year Six

Cara Frigeri**

Matthew Tough

ESL

Dorothy Gwillim

Louise Wilkinson

Zoe Cosnett

Music

Tomoko Ogusu

PE

Christian Hügel

Turkish

Hatice Girgin

French

Vincent di Placido

Teaching Assistants

Aslı Avcu

Nazlı Özyaprak

Melek Sentürk

Librarian

Şükran Uzun

Campus Secretary

Deniz Duru

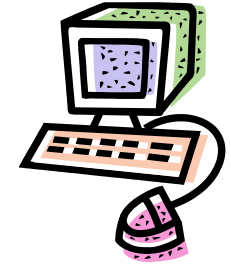
Campus Nurse

Yasemin Eryüksel

Computing

Each classroom has a computer and shared printer. In addition there is one lesson each week in the computer suite where computer skills are taught formally. They include:

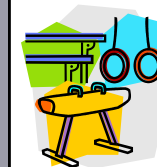
- Simulations
- Coding
- Internet Skills
- Email
- PowerPoint
- Digital Literacy



Physical Education (PE)

We have specialist PE teachers, who takes students for two 45 minute lessons per week.

We use the Zekeriya köy Campus facilities for swimming and athletics.



We hold an annual Cross Country Race, a Sports Day and a Swimming Gala.

Personal, Social, Health and Citizenship Education

We encourage students to be responsible, caring and confident members of the global community. This is achieved through implicit and explicit learning objectives following the SEAL-GD curriculum.



Science

Our course is based upon the Science National Curriculum Programmes of Study.

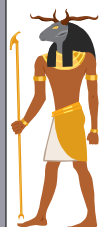
Topics covered during the year include:

Plants
Healthy Eating - Skeletons and Muscles
Rocks
Light and Shadow
Forces and Magnets



Humanities (History & Geography)

We follow the National Curriculum Programmes of Study but with a local flavour.



History

Ancient Egypt
My Family History
A Tale of Two Mosques

Geography

Our Local Area -
'Surprising Zekeriyaköy'
What's in the News?
Should people be allowed
to cut down the rainforest?

Design & Technology (DT)

Areas covered include:

Magnetic Games
Hats
Healthy Snacks
Simple Mechanisms



Art

This year we examine:
Observational drawing
Use of colour
Shape, form and
space
3D Art Collage



What is the National Curriculum?

The Structure

For each subject and for each *Key Stage*, *Programmes of Study* set out what students should be taught, and the *Attainment Targets* set out the expected standards of students' performance.

What are Key Stages?

Foundation Stage - *Reception*
Key Stage 1 - *Years 1 & 2*
Key Stage 2 - *Years 3—6*

What are Programmes of Study?

They set out what students should be taught in each subject at each *Key Stage*, and provide the basis for planning schemes of work.

What are Attainment Targets & Level Descriptions?

An *Attainment Target* sets out the knowledge, skills and understanding which students of different abilities and maturities are expected to have by the end of each *Key Stage*.

The *Level Descriptions* provide the basis for making judgements about students' performance at the end of KS1 and KS2.

Promoting Skills

There are 6 key skill areas:

- *Communication*
- *Application of number*
- *Information Technology*
- *Working with others*
- *Improving own learning and performance*
- *Problem solving*

Additionally there are:

Thinking Skills

By using thinking skills students can focus on 'knowing how' as well as 'knowing what', that is learning to learn.

- *Information Processing*
- *Reasoning*
- *Enquiry*
- *Creative Thinking*
- *Evaluation*

What are the National Literacy and Numeracy Strategies?

These are designed to focus on and raise standards in English and Mathematics.

An excellent link to help parents understand the curriculum is: www.direct.gov.uk/en/EducationAndLearning

Literacy

We base our Literacy (English) course on the National Curriculum Literacy guidelines. We have daily skills Literacy lessons each week plus one library lesson per week where we develop library skills.

Literacy is divided into three main sections. A variety of topics from all areas will be covered each term.

- Fiction
- Non-Fiction
- Poetry



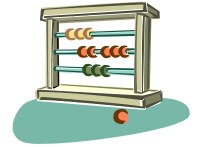
English as a Second Language (ESL)

We have three specialist ESL teachers, Dorothy Gwillim, Louise Wilkinson and Zoe Cosnett, to work with children for whom English is not a native language. They work alongside the class teacher and withdraw students as necessary, integrating the students back into mainstream lessons as soon as possible.

Numeracy

We follow the National Curriculum Numeracy guidelines. The planning structure for all years is organized into units. Each will be revisited termly. The units include:

- Number and Place Value
- Addition and Subtraction
- Multiplication and Division
- Fractions
- Measurement
- Geometry
- Statistics and Algebra



Modern Languages

Turkish

Students receive 45 minutes of Turkish each week, from Hatice Girgin.



French

Students in Year Three receive two lessons of 45 minutes each week from a specialist teacher, Vincent di Placido.

Music

Students have two 45 minute sessions each taken by a specialist Music teacher, Tomoko Ogusu.

