

**School Directors**

Amanda Ilhan

Pre School & Primary School Deputy Director

Phone: (0212) 2027027

Email: amandailhan@bis.k12.tr

Richard I'Anson

Pre School & Primary School Director

Phone: (0212) 2575136

Email: richardianson@bis.k12.tr

William Bradley

Secondary Director

Phone: (0212) 2027027

Email: williambradley@bis.k12.tr

**Director of Admissions**

Tuba Güven

Registrar

Phone: (0212) 2867375

Email: registrar@bis.k12.tr

**Head of PR/Communications**

Helen Kiran

Communications

Phone: (0212) 2027027 ext: 175

Email: communications@bis.k12.tr

[www.bis.k12.tr](http://www.bis.k12.tr)



Etiler Campus

CURRICULUM  
INFORMATION  
FOR YEAR SIX  
PARENTS

"Eruditio limites permeat"  
"Education Transcends Boundaries"



## Other things you might like to know

### **Staffing**

All our staff are qualified experienced expatriate teachers. With the exceptions of the teachers of French and Turkish they are all English native speakers mainly from the UK, Australia, New Zealand, Canada and the USA.

### **Assessment**

In line with the UK our students take their SATs at the end of Year 2 and Year 6. There is also a system of teacher assessment and extensive record keeping.

### **Reporting**

There are two formal written reports each year in December and June, as well as two Parent/Teacher Consultation evenings in October and April to discuss the work of your child.

### **Homework Policy**

We have a homework policy which covers the whole of Primary. In Year 6 your child should be receiving about 50 minutes of homework each evening. It should be recorded in a white Home School Contact Book which you can sign and return to school. This book can also be used as a means of communication between home and school.

### **Uniform**

We have a school uniform at BISI and we expect all students to wear it with pride.

### **Break Time**

There is a snack of fresh fruit or vegetables plus bottled water is available. Students are also required to bring in their own water bottle.

### **Lunch**

The school provides a cooked lunch every day, except on school journeys when a packed lunch is prepared. Lunch normally consists of soup, a main course and dessert. Bottled water is available to drink.

### **Extra Curricular Activities (Clubs)**

We have a range of clubs which run on a 6 week cycle. Information about the clubs are sent out around the beginning of each term.

### **Assemblies**

These are held every Friday afternoon. We have a wide range of assemblies from drama to music, puppets to celebrating success. Parents, relations and friends are always welcome to join us.

## A Message from the Director and Deputy Director

Dear Parents,

Welcome to the British International School Istanbul. BISI has a caring approach towards children and staff. The atmosphere is purposeful but calm where individuals are valued and respected.

We hope that you find this booklet useful. We have based much of our work on the National Curriculum for England and Wales. In this booklet you will find an overview of the National Curriculum and specific information on the work being covered in your child's class.

For more information, please feel free to contact us.

Yours sincerely,

Richard I'Anson

Pre School & Primary  
School Director

Amanda Ilhan

Pre School & Primary  
School Deputy Director

### CONTACT INFORMATION

Richard I'Anson

Phone: (0212) 2575136

Email: richardianson@bis.k12.tr

Amanda Ilhan

Phone: (0212) 2027027

Email: amandailhan@bis.k12.tr

# Our Primary Staff:



Director: Richard I'Anson  
Deputy Director: Amanda Ilhan

## Alkent Campus

### Year One

Aix Peacock

Molly Hill

### Year Two

Alison Güzel\*

Candace Borcharding

### ESL

Jennifer Woodham

### Music

Peter Lawson

### PE

Gill Yenilmez

### Turkish

Hatice Girgin

### Teaching Assistants

Yeliz Altünsoy

Ece Altinel

### Campus Secretary

Leda Davulciyan

### Campus Nurse

Mevne Beyleryan

\*Campus Coordinator

\*\*Curriculum Coordinator

### SENCo

Agnieszka Hügel

### SEN Teachers

Moira Reid

Rachel Lings

### SEN Teaching Ass.

Figen As

## Etiler Campus

### Year Three

Carolyn Güven\*

### Year Four

Heather Bowen

Jordan Smigelsky

### Year Five

Paul Pembridge

James Appleby

### Year Six

Nikki Dereboy

### ESL

Jackie Goudy

### Music

Peter Lawson

### PE

Gill Yenilmez

### Turkish

Hatice Girgin

### French

Vincent di Placido

### Teaching Assistants

Filiz Benian

Fulya Esen

### Librarian

Çiğdem Dwyer

### Campus Secretary

Rumeysa Utku

### Campus Nurse

Mevne Beyleryan

## Zek Campus

### Year One

Charlotte Emerson

Lizzie Lincoln

### Year Two

Julie Esiyok

Lynne Karabulut

### Year Three

Jill Parker

Julianne Aycan

### Year Four

Joanne Sutherland-Smith

Kate Thomas

### Year Five

David Scarff

Martin Boardman

### Year Six

Cara Frigeri\*\*

Matthew Tough

### ESL

Dorothy Gwillim

Louise Wilkinson

Zoe Cosnett

### Music

Tomoko Ogusu

### PE

Christian Hügel

### Turkish

Hatice Girgin

### French

Vincent di Placido

### Teaching Assistants

Aslı Avcu

Nazlı Özyaprak

Melek Sentürk

### Librarian

Şükran Uzun

### Campus Secretary

Deniz Duru

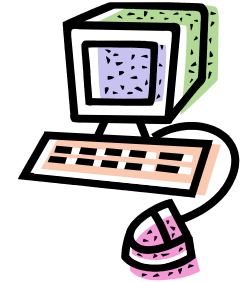
### Campus Nurse

Yasemin Eryüksel

## Computing

Each classroom has a computer and shared printer. In addition there is one lesson each week in the computer suite where computer skills are taught formally. They include:

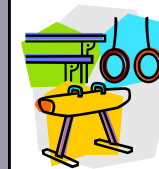
- Web Pages
- Debugging
- Java Script
- Excel



## Physical Education (PE)

We have a specialist PE teacher, Gill Yenilmez, who takes students for two 45 minute lessons per week.

We use the Zekeriya köy Campus facilities for swimming and athletics.



We hold an annual cross country race, a Sports Day and a Swimming Gala.

We also have an annual ski trip in February.

## Personal, Social, Health and Citizenship Education

We encourage students to be responsible, caring and confident members of the global community. This is achieved through implicit and explicit learning objectives following the SEAL-GD curriculum.



## Science

Our course is based upon the Science National Curriculum Programmes of Study.

Topics covered during the year include:

Light and Seeing Things, Changing Circuits, Evolution and Inheritance, Classification and Identification, Light and Electricity and Animals: Major in Human Origins



## Humanities (History & Geography)

We follow the National Curriculum Programmes of Study but with a local flavour.

### History

The Age of Exploration  
The Silk Road and The Grand Bazaar

### Geography

Mountains  
Geography of Coasts



Independent Humanities Project



## Design & Technology (DT)

Areas covered include:

Slippers  
Controllable Vehicles  
Fusion Food



## Art

This year we examine Art through the units:

Drawing  
Painting  
Textiles  
Printing  
People in Motion (Sculpture)  
Digital Media



## What is the National Curriculum?

### The Structure

For each subject and for each *Key Stage*, *Programmes of Study* set out what students should be taught, and the *Attainment Targets* set out the expected standards of students' performance.

### What are Key Stages?

Foundation Stage - *Reception*  
Key Stage 1 - *Years 1 & 2*  
Key Stage 2 - *Years 3—6*

### What are Programmes of Study?

They set out what students should be taught in each subject at each *Key Stage*, and provide the basis for planning schemes of work.

### What are Attainment Targets & Level Descriptions?

An *Attainment Target* sets out the knowledge, skills and understanding which students of different abilities and maturities are expected to have by the end of each *Key Stage*.

The *Level Descriptions* provide the basis for making judgements about students' performance at the end of KS1 and KS2.

### Promoting Skills

There are 6 key skill areas:

- *Communication*
- *Application of number*
- *Information Technology*
- *Working with others*
- *Improving own learning and performance*
- *Problem solving*

Additionally there are:

### Thinking Skills

By using thinking skills students can focus on 'knowing how' as well as 'knowing what', that is learning to learn.

- *Information Processing*
- *Reasoning*
- *Enquiry*
- *Creative Thinking*
- *Evaluation*

### What are the National Literacy and Numeracy Strategies?

These are designed to focus on and raise standards in English and Mathematics.

An excellent link to help parents understand the curriculum is: [www.direct.gov.uk/en/EducationAndLearning](http://www.direct.gov.uk/en/EducationAndLearning)

## Literacy

We base our Literacy (English) course on the National Curriculum Literacy guidelines. We have daily skills Literacy lessons each week, plus one library lesson per week where we develop library skills.

Literacy is divided into sections. The following text types will be covered. All text types are taught through:

- Different Genre
- Effective Punctuation
- Paragraph Writing
- Connectives and Conjunctions
- Show, not tell
- Poetry: Power of Imagery  
Finding a Voice



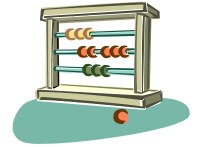
## English as a Second Language (ESL)

We have a specialist ESL teacher, Jackie Goudy, to work with children for whom English is not a native language. She works alongside the class teacher and withdraws students as necessary, integrating the students back into mainstream lessons as soon as possible.

## Numeracy

We follow the National Curriculum Numeracy guidelines. The planning structure for all years is organized into five blocks with each block being revisited termly.

The blocks are as follows:



**Block A** – Counting, partitioning and calculating

**Block B** – Securing number facts, understanding shape

**Block C** – Handling data and measures

**Block D** – Calculating, measuring, and understanding shape

**Block E** – Securing number facts, relationships and calculating

## Modern Languages

### Turkish

Students receive 45 minutes of Turkish each week taken by a specialist Turkish teacher, Hatice Girgin.



### French

Students in Year Six receive two lessons of 45 minutes each week from a specialist teacher, Vincent di Placido.

## Music

Students have two 45 minute sessions each taken by a specialist Music teacher, Peter Lawson.

