



Etiler Campus

CURRICULUM
INFORMATION
FOR YEAR SIX
PARENTS

"Eruditio limites permeat"
"Education Transcends Boundaries"

A Message from the Director and Deputy Director

Dear Parents,

Welcome to the British International School Istanbul. BISI has a caring approach towards children and staff. The atmosphere is purposeful but calm where individuals are valued and respected.

We hope that you find this booklet useful. We have based much of our work on the National Curriculum for England and Wales. In this booklet you will find an overview of the National Curriculum and specific information on the work being covered in your child's class.

For more information, please feel free to contact us.

Yours sincerely,

Richard I'Anson
Pre School & Primary
School Director

Amanda Ilhan
Pre School & Primary
School Deputy Director

CONTACT INFORMATION

Richard I'Anson

Phone: (0212) 2575136

Email: richardianson@bis.k12.tr

Amanda Ilhan

Phone: (0212) 2027027

Email: amandailhan@bis.k12.tr

Our Staff:



Director: Richard I'Anson
Deputy Director: Amanda Ilhan

Alkent Campus

Reception

Julie Dedeoğlu

Year One

Julie Peltek

Year Two

Margaret Boateng**

Alison Güzel*

ESL

Jennifer Woodham

Music

Lisa Mayer

PE

Gill Yenilmez

Turkish

Sibel Yiğit

Teaching Assistants

Meral Hullu

Dilek Ayan

Ege Altinel

Campus Secretary

Ataman Başpınar

Campus Nurse

Mevne Beyleryan

*Campus Coordinator

**Curriculum Coordinator

SEN (All Campuses)

Toni Altuğ

Etiler Campus

Year Three

Lizzie Lincoln

Jessica Holt

Year Four

Mary George*

Year Five

Eileen Aydınlar

Year Six

Nikki Dereboy**

ESL

Jackie Goudy

Music

Lisa Mayer

PE

Gill Yenilmez

Turkish

Sibel Yiğit

French

Lucie Lecocq

Teaching Assistants

Filiz Benian

Fulya Esen

Librarian

Çiğdem Dwyer

Campus Secretary

Rumeysa Utku

Campus Nurse

Mevne Beyleryan

Zek Campus

Reception

Heather Caron

Tuba Çalışır

Leigh Orman-Rutene*

Nurcan Burber

Year One

Katrina Beck

Esen Bozkaya

Year Two

Carolyn Güven

Lynne Karabulut

Year Three

Julie Eşiyok

Jill Parker

Year Four

Joanne Sutherland-Smith

Sarah Tatal

Year Five

Rebecca Fox

David Scarff

Year Six

Julianne Aycan

Cara Frigeri**

ESL

Dorothy Gwillim

Marion Oner

Music

Lisa Mayer

Gill Dwan

PE

Clayton Neill

Turkish

Sibel Yiğit

Nursena Kamas

French

Lucie Lecocq

Teaching Assistants

Didem Kerik

Figen Tolongüç

Zeynep Bayır

Yunus Tatal

Librarian

Şükran Uzun

Campus Secretary

Yeliz Altunsoy

Campus Nurse

Yasemin Eryüksel

What is the National Curriculum?

The Structure

For each subject and for each *Key Stage*, *Programmes of Study* set out what students should be taught, and the *Attainment Targets* set out the expected standards of students' performance.

What are Key Stages?

Foundation Stage - *Reception*
Key Stage 1 - *Years 1 & 2*
Key Stage 2 - *Years 3–6*

What are Programmes of Study?

They set out what students should be taught in each subject at each *Key Stage*, and provide the basis for planning schemes of work.

What are Attainment Targets & Level Descriptions?

An *Attainment Target* sets out the knowledge, skills and understanding which students of different abilities and maturities are expected to have by the end of each *Key Stage*.

The *Level Descriptions* provide the basis for making judgements about students' performance at the end of KS1 and KS2.

Promoting Skills

There are 6 key skill areas:

- *Communication*
- *Application of number*
- *Information Technology*
- *Working with others*
- *Improving own learning and performance*
- *Problem solving*

Additionally there are:

Thinking Skills

By using thinking skills students can focus on 'knowing how' as well as 'knowing what', that is learning to learn.

- Information Processing
- Reasoning
- Enquiry
- Creative Thinking
- Evaluation

What are the National Literacy and Numeracy Strategies?

These are designed to focus on and raise standards in English and Mathematics.

An excellent link to help parents understand the curriculum is: www.direct.gov.uk/en/EducationAndLearning

Literacy

We base our Literacy (English) course on the National Curriculum Literacy guidelines. We have daily skills Literacy lessons each week plus one library lesson per week where we develop library skills.

Literacy is divided into three main sections. A variety of topics from all areas will be covered each term.

Fiction

- Novels and stories by significant children's authors
- Traditional stories, fables, myths, and legends
- Stories from other cultures
- Older literature
- Film narrative
- Dramatic conventions



Non-Fiction

- Instructions
- Recounts
- Persuasive writing
- Persuasion

Poetry

- Poetic style
- Classic /narrative poems
- Choral and performance



English as a Second Language (ESL)

We have a specialist ESL teacher, Jackie Goudy, to work with children for whom English is not a native language. She works alongside the class teacher and withdraws students as necessary, integrating the students back into mainstream lessons as soon as possible.

Numeracy

We follow the National Curriculum Numeracy guidelines. The planning structure for all years is organized into five blocks with each block being revisited termly.

The blocks are as follows:

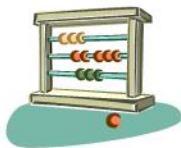
Block A – Counting, partitioning and calculating

Block B – Securing number facts, understanding shape

Block C – Handling data and measures

Block D – Calculating, measuring, and understanding shape

Block E – Securing number facts, relationships and calculating



Modern Languages

Turkish

Students receive 45 minutes of Turkish each week taken by a specialist Turkish teacher, Sibel Yiğit.



French

Students in Year Six receive two lessons of 45 minutes each week from a specialist teacher, Lucie Lecocq.

Music

Students have two 45 minute sessions each taken by a specialist Music teacher, Lisa Mayer.



Science

Our course is based upon the Science National Curriculum Programmes of Study.

Topics covered during the year include:

Food Chains, Micro-organisms, Dissolving, Different Changes, Forces in Action, Seeing Things, Changing Circuits, Growing Up



Humanities (History & Geography)

We follow the National Curriculum Programmes of Study but with a local flavour.

History

Tudor Exploration
Turkey: Then and Now



Geography

A Mountain Environment
Investigating Rivers

Design & Technology (DT)

Areas covered include:

Slippers
Fairground Rides



Art

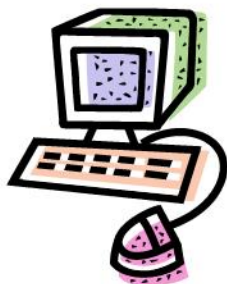
This year we examine:
A sense of place
People in action
Visiting a Gallery



Information and Communication Technology (ICT)

Each classroom has a computer and shared printer. In addition there is one lesson each week in the computer suite where computer skills are taught formally. They include:

- General Technological Awareness
- Multimedia Presentation
- Spreadsheets Modelling
- Control and Monitoring
- Using the Internet to search large databases



Physical Education (PE)

We have a specialist PE teacher, Gill Yenilmez, who takes students for two 45 minute lessons per week.

We use the Zekeriyaköy Campus facilities for swimming and athletics.



We hold an annual cross country race, a Sports Day and a Swimming Gala.

We also have an annual ski trip in February.

Personal, Social, and Health Education (PSHE)

We encourage students to be responsible, caring confident members of society. This is achieved by both informal means, the 'hidden curriculum'; and more explicit ways such as Circle Time and our 'SEALS' scheme.



Other things you might like to know

Staffing

All our staff are qualified experienced expatriate teachers. With the exceptions of the teachers of French and Turkish they are all English native speakers mainly from the UK, Australia, New Zealand, Canada and the USA.

Assessment

In line with the UK our students take their SATs at the end of Year 2 and Year 6. There is also a system of teacher assessment and extensive record keeping.

Reporting

There are two formal written reports each year in December and June, as well as two Parent/Teacher Consultation evenings in October and April to discuss the work of your child.

Homework Policy

We have a homework policy which covers the whole of Primary. In Year 6 your child should be receiving about 50 minutes of homework each evening. It should be recorded in a white Home School Contact Book which you can sign and return to school. This book can also be used as a means of communication between home and school.

Uniform

We have a school uniform at BISI and we expect all students to wear it with pride.

Break Time

There is a snack of fresh fruit or vegetables plus bottled water is available.

Lunch

The school provides a cooked lunch every day, except on school journeys when a packed lunch is prepared. Lunch normally consists of soup, a main course and dessert. Bottled water is available to drink.

Extra Curricular Activities (Clubs)

We have a range of clubs which run on a 6 week cycle. Information about the clubs are sent out around the beginning of each term.

Assemblies

These are held every Friday afternoon. We have a wide range of assemblies from drama to music, puppets to celebrating success. Parents, relations and friends are always welcome to join us.



**the
BRITISH**

**INTERNATIONAL SCHOOL
I S T A N B U L**

School Directors

Amanda Ilhan

Pre School & Primary School Deputy Director

Phone: (0212) 2027027

Email: amandailhan@bis.k12.tr

Richard I'Anson

Pre School & Primary School Director

Phone: (0212) 2575136

Email: richardianson@bis.k12.tr

William Bradley

Secondary Director

Phone: (0212) 2027027

Email: williambradley@bis.k12.tr

Director of Admissions

Tuba Güven

Registrar

Phone: (0212) 2867375

Email: registrar@bis.k12.tr

Head of PR/Communications

Helen Kiran

Communications

Phone: (0212) 2027027 ext: 175

Email: communications@bis.k12.tr

www.bis.k12.tr